

1 nF Capacitive Divider (24kV)

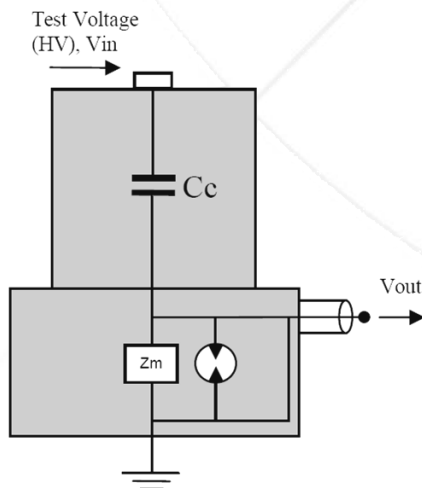


Techimp 1 nF Capacitive Divider is a capacitive coupler that can be used for partial discharge (PD) measurements.

It can be chosen as PD sensor for Techimp PDCheck, PDScope or PDBasell systems. It is suitable for on line or off line PD tests on rotating machines, for both spot measurements and monitoring applications. A BNC termination is available to connect the coupler through a coaxial cable.

The high voltage is applied to the coupler through the voltage tap on the top. The capacitive divider includes, in the base, a measurement impedance (Z_m) which allows both PD and synchronization signals (i.e. reference voltage) to be derived. The base includes also a surge arrester which limits the maximum transient output voltage.

Installation scheme



SPECIFICATIONS	
Capacitance	1nF±5%
Frequency range	50÷60 Hz
Rated Voltage (rms phase-to-ground)	24kV
Withstand AC voltage (1minute)	50kV
PD level (@24kV)	<2pC
Vout @24kV/50Hz (60Hz)	1/1000 HV +/- 20%
Phase Vout vs HV applied	<1°
Operating temperature range	0°C ÷ +85°C
Output tap	BNC Female
Weight	10kg

Mechanical Design

